

**NEWSLETTER No. 137: July 2018****Committee****President:** Alison Mooreanchorsmoore@westnet.com.au**Vice President:** Gwyn Clarkegcl.38500@bigpond.com**Secretary:** Rob Wattrob8milehill@yahoo.com.au**Treasurer:** Janice Fitzpatrickjfitzpatrick9@bigpond.com

0418350937

Newsletter Editor: Jan Whittlejan64garden@gmail.com**Publicity Officer:** *vacant***Website**

Keep up-to-date with news, outings and meetings by visiting our website:

www.austplants.com.au/Coffs-Harbour**New Members**

Sadly, none!

Membership Renewals

Renew online via APS website:

www.austplants.com.au**Newsletter Contributions**

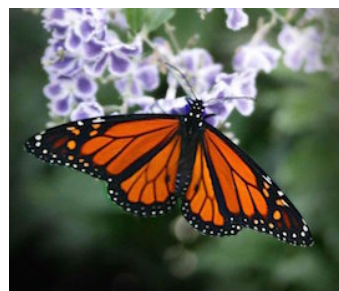
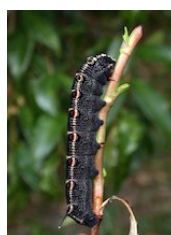
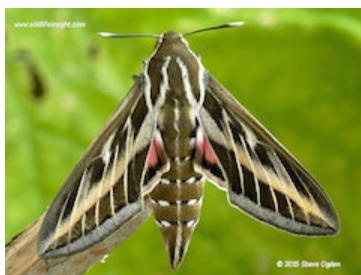
Thanks to members who have sent in material for this edition. If you have something of interest to share, please contact the Editor, Jan Whittle.

Payment is also available by cheque or credit card to the Treasurer, Janice Fitzpatrick. Please contact her if you need assistance.

Next Meeting: Tuesday, July 17: 10am – 1pm**Guest Speakers: Carol and Trevor Deane****Topic: *Butterflies of Coast and Plateau***

Using photographs Carol & Trevor Deane will show some of the 85 species of butterflies that visit their Dorriggo Plateau property. They will discuss some interesting facts including life histories and food requirements for butterflies and their caterpillars; and explain which shrubs and trees they are introducing to their property to help attract more butterflies and moths. As their interests extend to moths they will also include some of the larger moths they find on their property, particularly the very large and most attractive Hawk Moths.

Morning tea: Please bring a plate of food to share. Tea and coffee will be provided.



Next Field Trip: Sunday July 22
Visit to Lindy Hills and Wayne Hartridge's Private Garden
Location: 77 Keoghs Road, Bonville

The visit to our place is to show our efforts at changing cow paddock to trees using plants grown from seed. To get to our place head south on the Pacific Highway, turn off at the Archville Station Rd exit; go right at the roundabout towards Butlers Rd, straight ahead at the next two roundabouts and keep going along Butlers Rd. Keoghs Rd (our road) is first turn on the left. We are No.77 - last driveway on the left before the State Forest. We will provide morning tea.

Meeting August 14: 7pm – 10pm
Guest Speakers: Gwyn Clarke and Barry Kemp
Topic: Wet and Dry Heath

Although covering a very small area of the continent, Australian heathland is very rich in plant diversity and is full of colour and interest in Spring. Gwyn and Barry will discuss and illustrate the heathland flora, with emphasis on nearby NSW coastal heath. Gwyn will also illustrate the diverse woodland heath surrounding her home.

Refreshments: Please bring a plate of food to share. Tea and coffee will be provided.



Epacris reclinata



Montane Heath



Coastal Heath

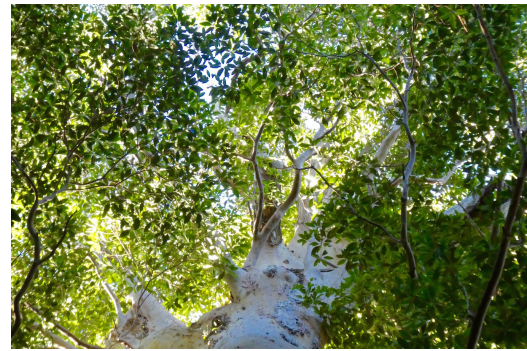
Jan Whittle: Visit to Norm Jolly Memorial Grove, Dorriggo Plateau

Photos: Jan Whittle

Once again, Barry Kemp organised and led a wonderful field trip for us. It was a full day with considerable distances to drive and some rough dirt roads to negotiate. We were fortunate to have a mild, sunny day to explore the Norm Jolly Memorial Grove in the Nymboi Binderay National Park.

The Memorial Grove commemorates Norm William Jolly (1882-1954) for his contributions to the teaching and practice of forestry in Australia. He served as forestry commissioner of NSW 1918-1925 and established the first university course in forestry training in Australia. The Grove features a stand of giant *Eucalyptus microcorys* (Tallowwood); including an 800-year old tree that is an impressive 55 m tall and has a circumference of 8.5 m (measured one metre above ground). The foliage of Tallowwoods is a favourite food of koalas, but unfortunately this species has been heavily logged for its sought-after oily timber.

After morning tea, we walked Coachwood Track for about 1km through an old-growth forest with original stands of *Eucalyptus microcorys* (Tallowwood), *Ceratopetalum apetalum* (Coachwood), *Schizomeria ovata* (Crabapple), *Eucalyptus saligna* (Blue Gum), *Karrabina benthamiana* (Red Carabeen) and *Tristaniopsis laurina* (Watergum). A young *Araucaria cunninghamii* (Hoop Pine) was spotted in the undergrowth. The forest was alive with bird song and the fallen fruits of many trees were found along the way. The path led us through a small gully densely filled with tree ferns and where lichens and mosses were growing on fallen tree trunks.



We proceeded to Platypus Creek for lunch in the picnic grounds by the Nymboida River to complete a most enjoyable outing. On the way home, Rowan showed some of us more giant Tallowwoods on Box Ridge Trail in Cascade National Park.

Barry Kemp: The Eastern Banksias

Photos: Barry Kemp

Invariably, if you ask a florist for a bouquet of Australian flowers, some African Proteas or Leucospermums will be included. There may be one or two Banksias, but often these are dried lurid colours. Florists aside, Banksias are amongst the best-known Australian plants and are being grown in many countries. All native gardens should have at least one.

Most native plant enthusiasts have a “bucket list” which includes one or more visits to the South-west of WA, where the largest number of Banksias, and the most showy ones, grow naturally. The transfer of all of the *Dryandra* species to *Banksia* has raised the total to more than 170 species. (This has been controversial, but there are some Banksias that look more like Dryandras and the change followed DNA sequencing, so we should accept it and move on).

Attempts to grow the “Western” species in the Eastern states are usually unsuccessful, except in some dry areas. I was able to grow 3 species (including what was then a *Dryandra*) in a cool part of Victoria, but have had no luck in Coffs Harbour. Grafting is occasionally tried and I had a *B. occidentalis*, which I grafted onto *B. integrifolia*. It lived for ten years and produced one flower!

I sometimes see raised eyebrows when I say that there are more than 20 Banksias growing naturally in the Eastern states. I have grown many of these locally, although some may be reluctant to flower. The Eastern ones are listed below.

Note that there is a complex group shown here as *B. spinulosa*, *B. cunninghamii*, *B. collina* and *B. neoanglica* which has been the subject of disagreement amongst botanists for a very long time, (which are valid species and which should be sub-species?). *B. vincentia* may also belong to this group. I have used names currently in favour at the NSW herbarium.

* = may be slow to flower here. **H** = highly recommended for Coffs Harbour
B = can be seen in the Botanic Garden **S**=shrub (to 3m.) **T**=small tree

B. aemula **H, B, S**. An attractive one confined to coastal heath, with an outlier on sandstone north of Glenreagh (Clarke's residence).

B. aquilonia. **T**. Atherton tableland area, mostly on granite, but will grow here.

B. canei. * **S**. A small shrub from Eastern Vic. highlands and southern NSW.

B. collina **H, B, S**. Very common locally. Has been regarded as a sub-species of *B. spinulosa*.

B. conferta. **S**. Limited to the ranges in SE. Qld. May be OK here.

B. croajingolensis. **S**. Confined to far Eastern Vic. A possible hybrid.

B. cunninghamii. **S**. Sometimes regarded as a sub-species of *B. spinulosa*. Widespread along the coastal ranges.

B. dentata. **T** or **S, B**. Widespread in the tropics from WA to Qld. Will grow here, but best grafted.

B. ericifolia subsp. *ericifolia*. **S**. Central coast, less desirable for the garden than the following.

B. ericifolia subsp. *macrantha*. **H, B, S**. Taree to the Qld border (but there is a gap in the Coffs Harbour area). One of the best for the garden.

B. integrifolia. **H, B, T**. Locally common, winter flowering.

B. integrifolia subsp. *compar*. **H, T, B**. A tall form from Qld.

B. integrifolia subsp. *monticola*. **H, T, B**. Blue Mts & northern tablelands, where trunks can exceed 1.5m diam.

B. marginata * **S, B**. Common south of Sydney, but on the north Coast it is confined to Gibraltar Range, where it is a small shrub.

B. neoanglica * **S**, Northern tablelands and into Qld. Has been regarded as a subspecies of *B. spinulosa* or *B. cunninghamii*.

B. oblongifolia. **H, B, S**. Locally common in wet heath. A taller form is found in the coastal ranges.

B. ornata. **S**. Restricted to far western Vic. and into S.A. Not suitable for here.

B. paludosa subsp. *paludosa*. **S**. Central tablelands only. Not tried here.

B. paludosa subsp. *astrolux*. **S**. Known only from a small area of the Central Tablelands.

B. penicillata. **S**. Another from the Central tablelands. Untried here.

B. plagiocarpa. **H, B, S**. Restricted to Hinchinbrook Is. and nearby mainland. Blue-grey flowers.

B. robur. **H, B, S**. Mostly in coastal wet heath, scattered between Wollongong and Cooktown. Spreading shrub with very large leaves. Bright green young flowers. Survives fire.

B. saxicola. **T**. Restricted to the Grampians and Wilsons Promontory. Untried here.

B. serrata. **H, T, B**. Resembles *B. aemula*, but taller and usually found on drier sites.

B. spinulosa. **S**. Closely related to *B. collina* and *B. cunninghamii*.

B. vincentia. **S**. Recently described semi-prostrate shrub. Rare: a single population near Jervis bay. May have horticultural potential.



(L to R) *B. oblongifolia*; *B. ericifolia*; *B. aemula*



Vale Gordon Myall

We note with sadness, the passing on June 26th of Gordon Myall, valued past member and lichen expert. Our sincere sympathies are extended to his wife Bronwen and family.

~~~~~

### **FREE**

Old manual projector, *Agfa Colour 50 Auto*, with rectangular slide magazines.

Contact Alison Moore on 0439 597 118

### **Notice of NSW Events**

#### **July 14**

Menai Wildflower Group Super Meeting

Speakers Dr Mark Ooi and Dr John Porter

*Season and Smoke: Key Elements in Dormancy and Germination*

Plant Sales, Raffle

Meeting Commences at 1pm, Gardens Open at 12

Illawong Rural Fire Station, Old Illawarra Rd, Illawong

Email: menaiwildflower @[austplants.com.au](https://austplants.com.au) Facebook

<https://austplants.com.au/Menai-Wildflower>

#### **September**

Memo from Barbara Nevin, President of Armidale district group: "We are having a special Open Forum in September when we are having a guest speaker from Canberra. Our guest speaker is Ben Walcott who is leader of the Garden Design Study Group for ANSPA who will talk about Garden Design Using Australian Native Plants. Further information will be provided at the end of July."